



Sheila Dixon, Mayor

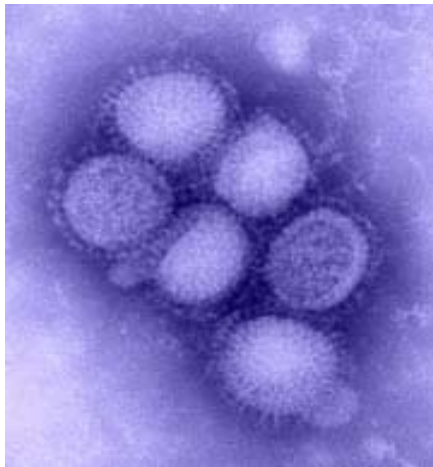
H1N1 (Swine) Flu Response



Baltimore City Health Department

Update to LEPC

May 21, 2009



U.S. Human Cases of H1N1 Flu Infection

(Information as of May 20, 11:00am)

- **5,710 Confirmed Cases in US**
 - **8 Deaths in US**
 - **48 States in US**

- **Maryland has 39 Confirmed Cases**

About H1N1 (Swine) Flu

H1N1 (referred to as “swine flu” early on) is a new influenza virus causing illness in people. This new virus was first detected in people in April 2009 in the United States. This virus is spreading from person-to-person, probably in much the same way that regular seasonal influenza viruses spread.

Baltimore Response Action Steps

- o 311 script for calls regarding swine flu
- o Created a website
- o Participated in daily conference calls with DHMH, other MD local health departments, and MD hospitals
- o Met with 1st responders to discuss infection control measures
- o Conducted biosurveillance
- o Worked with City Schools
- o Issued a press release and held press conference
- o Convened a panel of experts to discuss response efforts moving forward and public messaging.
- o Compiled flu prevention and healthy habits outreach materials

Incident Management Activities

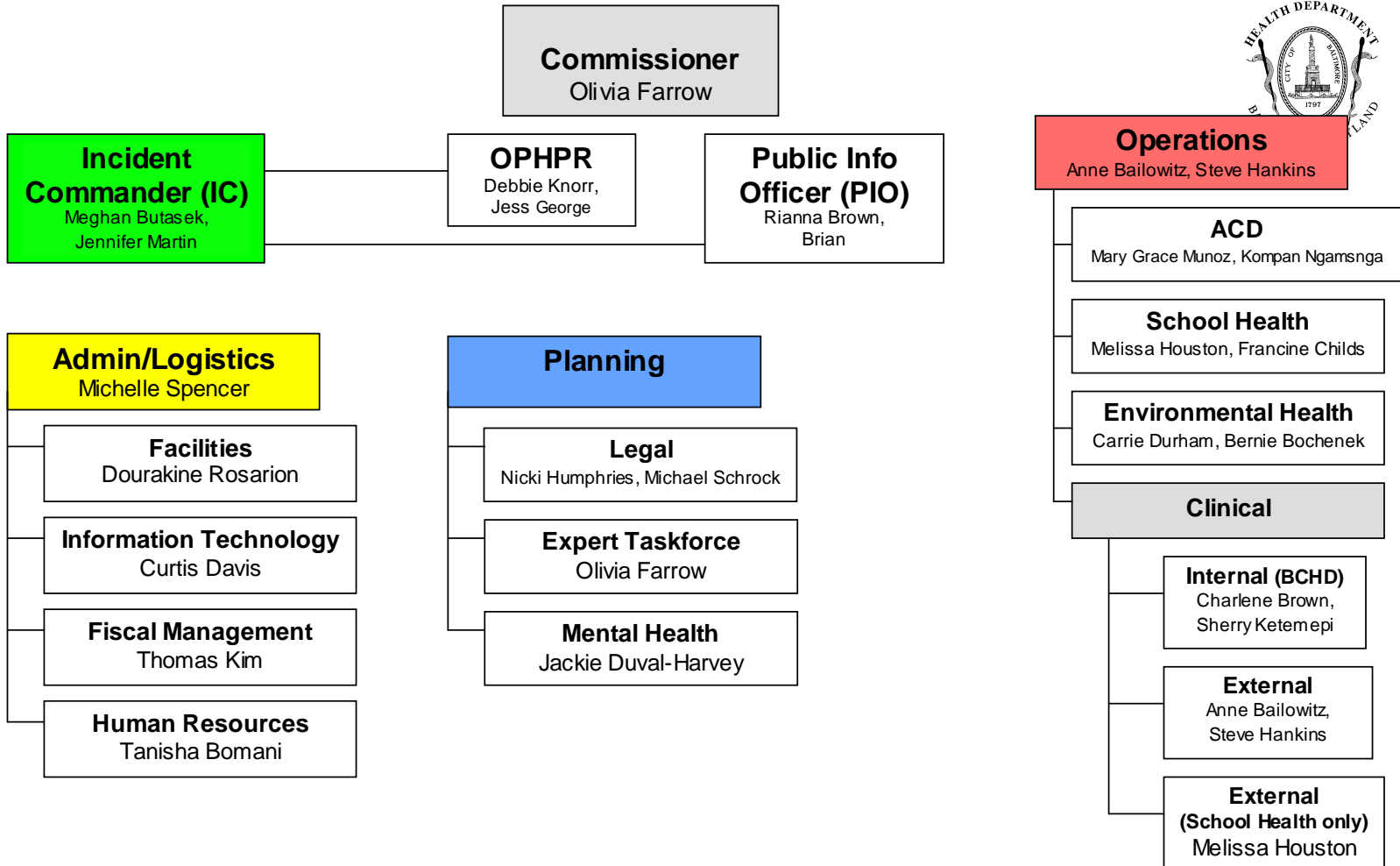
- Conduct weekday meetings of team.
- Conduct weekend conference calls.
- Triage of calls and issues.
- Share situational awareness info.
- Provide weekday updates to City agencies and City hospitals.
- Communicate with healthcare providers and the public.



BALTIMORE CITY HEALTH DEPARTMENT

H1N1 Transitional Period Incident Command System (ICS)

April 2009



What You Can Do to Prepare

- City-wide Preparedness

- Develop/Update Continuity of Operations (COOP) info for your agency/organization.
- Promote good health habits.
- Stay informed of news, website and email updates.

- Personal Preparedness

- Make a plan for yourself and your family.
- Practice good health habits.

Continuity of Operations (COOP)

- **All Hazards COOP Planning**
 - **Purpose:** Continue essential functions during any type of disruption to services.
- **Pandemic Flu COOP Plans:**
 - **Purpose:** Place COOP within the context of a contagious disease outbreak disruption to business activities.
 - What can I do if my business doesn't have a Pan Flu COOP?
 - How do we use it?

Department of Health and Human Services



Business Influenza Planning Checklist

<http://www.pandemicflu.gov/>

Plan for the impact of a pandemic on your business:

- Identify an emergency planning coordinator and/or team.
- Identify essential employees and other critical inputs.
- Find up-to-date, reliable pandemic information from community public health, emergency management, and other sources.
- Establish an emergency communications plan.
- Implement an exercise/drill to test your plan.

Plan for the impact of a pandemic on your employees and customers:

- Forecast and allow for employee absences during a pandemic.
- Implement guidelines to modify the frequency and type of face-to-face contact.
- Encourage annual influenza vaccination for employees.
- Identify employees and key customers with special needs, and incorporate the requirements of such persons into your preparedness plan.

Establish policies to be implemented during a pandemic:

- Establish policies for employee compensation and sick-leave absences.
- Establish policies for flexible worksite and work hours.
- Establish policies for preventing influenza spread at the worksite.
- Set up authorities, triggers, and procedures for activating and terminating the response plan.

Allocate resources to protect your employees and customers during a pandemic:

- Provide infection control supplies.
- Enhance communications and information technology infrastructures.
- Ensure availability of medical consultation and advice for emergency response.

Communicate to and educate your employees:

- Develop and disseminate information covering pandemic fundamentals, personal and family protection and response strategies.
- Disseminate information to employees about your business emergency plan.
- Develop ways for communicating pandemic status and actions.
- Identify community sources for timely and accurate pandemic information

Coordinate with external organizations and help your community:

- Collaborate with federal, state, and local public health agencies and emergency responders.
- Communicate with local and state public health agencies and emergency responders about the assets and/or services your business could contribute to the community.
- Share best practices with other businesses in to improve community response efforts.

**What can I do to
protect myself from
getting sick?**



Cover Your Cough



Cover your nose and mouth with a tissue when you cough or sneeze.

Throw the tissue in the trash after you use it.

Hand Hygiene

Wash your hands often with soap and water, especially after you cough or sneeze.

**Wash
'em!**



www.cdc.gov/h1n1flu »



Other Important Actions

- Follow public health advice regarding social distancing measures.
- Be prepared in case you or a family member gets sick and needs to stay home.



Information Resources

- Baltimore City Health Department's Website
www.baltimorehealth.org
 - Featuring Links to:
 - Maryland Dept. of Health and Mental Hygiene
 - Centers for Disease Control
 - World Health Organization
- Call 311